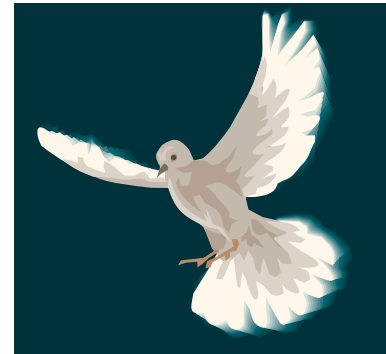


ST. GREGORY THE GREAT

Family Faith Formation



2010-11
Handbook & Calendar

In case of inclement weather, please listen to
WBEN 930 or WGR 550 or watch Channels 2, 4 or 7.
Please do NOT call the Rectory or Faith Formation Office.

DIRECTOR'S MESSAGE

Dear Parents and Guardians,

As parents, we know that you feel a tremendous burden to try to raise your children in the faith. We know you take seriously your responsibility to reach your children about God, the sacraments, the church and its traditions. We want you to know that **YOU ARE NOT ALONE!** Your family faith formation staff supports you in this responsibility. We too feel that your children are entrusted to us. We support you in your role as the primary teachers of your children.

Faith formation is a continuous, lifelong process. St. Gregory the Great Parish provides a systematic program of instruction where children in peer groups learn in an environment where they **experience a sense of community as well as learning the truths of the Catholic faith.** Faith formation occurs throughout the entire life of the child. Children are best able to integrate the meaning of religious truth into their lives when parents support instruction by **regular attendance at Mass**, by family prayer, by respect for all the sacraments, and through family discussion of the religious dimension of everyday life.

The programming in this handbook provides concrete ways that we, as your parish family, can help you. It is our hope that you will take advantage of what we have to offer.

Please do more than look through this handbook. After taking a look at the programs, please make sure you and your family are participating!

In Christ's Love,
Joan Rischmiller
Director of Family Faith Formation

**PLEASE SAVE THESE MATERIALS
THROUGHOUT THE 2010-2011 SCHOOL YEAR**

CONTENTS

Director's Message	2
Table of Contents	3
Family Faith Formation Staff/Youth Minister	4
Family Faith Formation Board	5
Security Policy	6
General Information	7
Classroom Rule/Dress Code	8
Attendance Policy/Church Attendance	9
RCIA - Childrens Catechumenate	10
Little Cherubs Schedule	11
Grade 1-5 Schedule	12
Jr. High Schedule	13
Generations of Faith	14
Public High School Level 1	15
Public High School Level 2	16
Sacramental Information	17
Special Program Events	18
Parish Information	19
Outreach & Catholic Charities	20

Office Hours

**Monday-Friday 9:00 am - 2:00 pm
& when classes are in session
Phone: 688-5760/Fax: 639-8251**

Visit our web page at www.stgregs.org

FAMILY FAITH FORMATION STAFF

DIRECTOR JOAN RISCHMILLER 688-5760 EXT. 358

FAITH FORMATION COORDINATORS 688-5760

Pre-School

Jesswica Buchheit

Grade 1 - 4

Kathy Tufillaro

Grade 5 - 8

Megan Looney

Generations of Faith

Joan Rischmiller

High School & Confirmation

Jenny Golinski

Children's Catechumenate

Mary Ann Williams

Children's Music Director

Consuela DeLosSantos

YOUTH MINISTERS

Joe Chernowski - 688-5678 ext. 316 - jchernowski@stgregs.org

Maria Coppola - 688-5678 ext. 341 - mcoppola@stgregs.org

Jennifer Gorczynski, Young Adult Coordinator
688-5678 ext. 338 youngadult@stgregs.org

FAMILY FAITH FORMATION BOARD

Our Family Faith Formation Board is an advisory group who works with the Director of Family Faith Formation and Faith Formation Staff to establish policy, develop curriculum and implement various programs.

Meetings are held the 3rd Saturday of each month at 11:15 a.m. in the school art room. Interested parents are always welcome.

2010-2011 EXECUTIVE BOARD

- Rev. Joseph C. Gatto (Pastor)
- Rev. Paul Salemi (Moderator)
- Joan Rischmiller (Director of Family Faith Formation)

FAMILY FAITH FORMATION BOARD MEMBERS

Nick Gallegos
— *Chairperson*

David Mikulski
— *Vice Chairperson/
Treasurer*

Sarah Anderson
— *Secretary*

Mary Criden

Greg Gaulin

Nina Kresse

**George & Arlene
Meyerhofer**

Sam Piazza

Susan Pope

SECURITY POLICY

ARRIVAL & DISMISSAL OF STUDENTS

- Everyone must enter and exit school from the **front doors**.
- **Saturdays - Grades 1-3** - Parents are asked to drop off and pick up students at their classrooms.
- **Wednesdays - Grades 1-4** - Parents are asked to drop off and pick up students at their classrooms.
- **Students arriving late and leaving early** - For the safety of our children and security of our building, all parents and visitors who have a need to enter the building while classes are in session, **must first report to the office and state the reason for the visit**. If a child needs to be excused from the class early a written excuse signed by the parent must be given to the child's catechist at the beginning of class. The parent must sign the early release log and wait for the child in the office.
- **Front doors will be locked** 10 minutes after classes begin and unlocked 10 minutes before dismissal. Parents, students, etc. will need to be buzzed in.
- **Students in grades 1-4** - must have a classroom aide accompany them to the bathrooms. **Students in grades 5-8** - teachers should send two students at a time.
- **"Little Cherubs"** Pre-school students need to have a parent sign them in and out for each class.

This is done for the safety & protection of each child.

Please direct any questions or concerns you may have to
Joan Rischmiller at 688-5760, ext. 358.

GENERAL INFORMATION

MISSION STATEMENT

At St. Gregory the Great's Family Faith Formation, we believe that faith formation is a continuous, lifelong process. Learners are encouraged to learn in an environment where they experience a sense of community, celebrate the Sacraments, as well as learning the truths of their Catholic faith.

REGISTRATION

Resignations and payments can be made online, in person, or by mail.

Families must be registered in St. Gregory's parish. Paid registrations will be processed in the order they are received. If there are any problems or questions concerning payment of the fee, please contact the Family Faith Formation Office. No child will be denied instructions in their faith. **NO REGISTRATION WILL BE ACCEPTED BY PHONE.**

EVALUATION

Written evaluations are given to parents/guardians of each student in the religious education program each semester. Written and oral tests determine if basic Catholic teachings are known and understood. Evaluations are sent home with learners at the beginning of the second semester and are to be reviewed. Final evaluations are sent home on the last session of the year.

RULES ABOUT VISITING AND LEAVING CLASSROOM EARLY

For the safety of our children and security of our building, all parents and visitors who have a need to enter the building while classes are in session, **must first report to the office and state the reason for the visit**. If a child needs to be excused from the class early a written excuse signed by the parent must be given to the child's catechist at the beginning of class. The parent must sign the early release log and wait for the child in the office. This is done for the safety and protection of each child.

STEWARDSHIP COMPONENT

In order to convey the message that time, talent and treasure are essential components to the Catholic lifestyle, age-appropriate apostolic projects are included at each level of faith formation (i.e. parish food drives, clothing drives, etc.). Please encourage your child(ren) to participate.

CURRICULUM PROGRAM, CATECHIST CONCERNS

OR SUGGESTIONS:

Please contact the Director of Family Faith Formation:

JOAN RISCHMILLER - 688-5760

CLASSROOM RULES

- 1) Respect the catechist and other learners by BEING ON TIME for your session and Christian courtesy to all. HATS AND COATS OFF DURING CLASS TIME.
- 2) Respect the property that is given for your use. Do not open desks or touch lockers. NO GUM, CANDY OR ANY OTHER FOOD IS ALLOWED INTO THE BUILDING.
- 3) Any radios, MP3s, CD/tape recorders, phones, beepers, skate boards, hee-lies, electronic toys, or stuffed animals brought into the building must be left at the Faith Formation Office and picked up after class.
- 4) To avoid accidents and other serious problems — running, shoving, pushing and snowballs are prohibited at all times!
- 5) Any learner who is tardy (arrives after the times listed) MUST FIRST REPORT TO THE OFFICE FOR A LATE SLIP before going to the classroom.
- 6) Learners are not allowed anywhere in the building without adult supervision
- 7) Learners cannot enter a classroom, gym or cafeteria without a catechist or a designated adult present.
- 8) Learners who take part in disrupting their session by having a lack of respect for their catechist and/or peers will receive a verbal warning from their catechist. If the disruption occurs again, the learner will be asked to: (See right column.)

DRESS CODE

Learners must come to class appropriately dressed. No bare midriffs, halter tops, or suggestive clothes are allowed in class*.

- | | |
|---|--|
| a.) <u>Shorts and skirts</u> - The length must be longer than fingertips when standing naturally with arms to the side. | c.) <u>Pants</u> - Pants should be worn at the waistline. Sagging is not acceptable. Underwear should remain "down under." |
| b.) <u>Necklines</u> - No visible cleavage. | |

* Parents will be called to pick up student immediately if this is not followed.

NO "Heelies" allowed in the School Building for the safety of all students.

ATTENDANCE POLICY & MASS ATTENDANCE

The Board adheres to the following policy in terms of Family Faith Formation programs for learners in grades 1 through 12.

- 1) It is expected that parents who are members of St. Gregory the Great Parish will provide for the regular religious instructions of their children by enrolling them in programs provided by the parish (school and/or Family Faith Formation). Sacramental preparation is offered for those learners wishing to receive sacraments.
- 2) Learners are responsible to attend sessions regularly and to miss a session only when there is a serious reason (i.e. illness, death in the family). Parents will be contacted by the Faith Formation office to do remedial work so their child may advance to next level. Parents are asked to **send an excuse to the catechist or the Faith Formation Office in the event of an absence** and to make up any work missed.
- 3) Parents are expected to ensure that the learner continues their faith formation throughout the **twelve years of elementary and high school (until Confirmed)**.
- 4) Learners (Grades 1-8) - See Lesson Schedule in student books.
- 5) As Catholics, we believe it is the primary responsibility of each parishioner to keep Holy the Sabbath. You may not be aware that the current tuition for our programs is made possible only by significant Parish subsidy. As a result, it has become necessary for us to determine who is a parishioner and to ask non-parishioners to pay the actual cost of each program. To determine who is a parishioner, the only feasible way is to monitor Mass attendance through the Parish Envelop System. While it is our hope that every family will support the parish, you are not required to make a monetary contribution as part of coming to Mass or to qualify for the parishioner tuition rate. We ask simply that you place an envelope in the basket so that we know you are participating weekly in the Liturgy here at St. Gregory's as you agreed when you enrolled your children in our program.

THIS POLICY GIVES RISE TO THE FOLLOWING RESTRICTIONS:

- 1) Children whose parents are members of St. Gregory the Great may not be educated in other settings (i.e. other parishes) without the express written consent of the Pastor or the Director of Family Faith Formation.
- 2) The Pastor relies on the Director of Family Faith Formation to recommend young people for the reception of Sacraments of First Reconciliation, First Communion and Confirmation. Such recommendation may be withheld if those young people have not regularly attended to their **religious instructions and weekly Mass attendance**.
- 3) The Director of Family Faith Formation may recommend remedial instruction for any learner who has not heretofore been enrolled in a program of regular faith formation. Such remedial instruction will be adapted to the needs of the learner and may, in some cases, result in an altered time sequence for the reception of Sacraments.

RCIA (CHILDREN'S CATECHUMENATE)

**CHILDREN WHO HAVE MISSED A YEAR OR MORE
OF FAMILY FAITH FORMATION:**

- Parents will be contacted by the Director of Family Faith Formation. The Director will interview the parent and student(s) and will help them catch up so they can be placed in our regular sessions.

**UNBAPTIZED CHILDREN OR CHILDREN WHO NEED
TO MAKE UP A MISSED SACRAMENT:**

- Parents will be contacted by the Family Faith Formation Office and will be placed in RCIA (Children's Catechumenate), in addition to their regular classes, to help them catch up.
- The parish and the families work together to prepare for the reception of the Sacraments.

CHILDREN WHO ARE HELD BACK IN PUBLIC SCHOOL:

- Children are placed in a graded program of Family Faith Formation. It is recommended that children are placed in the **same grade that they are in public school**. If a child is held back, it is usually due to immaturity, not failure. These children should repeat the same grade in their faith formation. We will assign them a new catechist.

LITTLE CHERUBS SCHEDULE

**Saturday 9:00 - 10:30 am
Ages 3, 4 & 5 (Kindergarten)**

2010

September	18
	25
October	2
	16
	23
	30
November	6
	13
	20
	27 <i>(No Session)</i>
December	4
	11
	18
	25 <i>(No Session)</i>

2011

January	8
	15
	22
	29
February	5
	12
	19 <i>(No Session)</i>
	26 <i>(No Session)</i>
March	5
	12
	19
	26
April	2
	9
	16 <i>(Last Session)</i>

WEDNESDAY, GRADES 1-4

6:30 p.m. - 7:45 p.m.
(See Page 13 Wednesday Schedule)

GRADES 1-5

Saturdays: 9:00 - 10:30 am *OR* 11:15-12:45 pm

(*) Dates Childrens Choir will meet

2010		2011	
September	18 25 (*)	January	8 15 (*) 22 (*) 29 (*)
October	2 (*) 9 (No Session) 16 (*) 23 (*) 30 (*)	February	5 (*) 12 (*) 19 (No Session) 26 (No Session)
November	6(*) 13 (*) 20 27 (No Session)	March	5 (*) 12 (*) 19 (*) 26 (*)
December	4 (*) 11 (*) 18 (See Below) 25 (No Session)	April	2(*) 9 (*) 16 (See below - <i>Last Session</i>)

Christmas Pageant - Saturday, December 18, 2010 **and**
Easter Pageant - Saturday, April 16, 2011
 9:30am in Church for **both** sessions of Family Faith Formation
 Saturday Classes grades 1-5. **All** learners & catechists report
 to their regular classrooms by **9:15 am**.

Mondays, Grades 6-8

2010		2011	
September	13 20 27	January	3 10 17 (No Session) 24 31
October	4 9(No Session) 18 (See below) 25	February	7 14 21 (No Session) 28
November	1 8 15 22 29	March	7 14 21 28
December	6 13 20 (No Session) 27 (No Session)	April	4 11 (Last Session)

***Field Trips:** (Oct. 18-22-No FFF classes Gr. 5,6,7 & 8
 Gr. 5 Field Trip to O.L.V. Thurs. 10/13
 Gr. 6 Field Trip to Temple Beth Am Tues. 10/19
 Gr. 7 Field Trip to St. Louis Church Mon. 10/21
 Gr. 8 Field Trip/Mass at St. John Maron's 10/20

Wednesdays, Grades 1-8

2010		2011	
September	15 22 29	January	5 12 19 26
October	6 13 (Gr. 1-4 & Gr. 6-8) *20 (Gr. 1-4 only) 27	February	2 9 16 23 (No Session)
November	3 10 17 24 (No Session)	March	2 9 16 23 30
December	1 8 15 22 & 29 (No Sessions)	April	6 13

GENERATIONS OF FAITH

A program running September - April in which the primary religious educator of the children is the parents. The entire family joins other families for monthly sessions at the school to learn and further grow in their faith. Attendance (parents and learners) at monthly sessions, is expected.

Students who arrive late or leave early will NOT receive credit for attending a class.

This program is designed for learners 1st through 10th grade as an alternative to our regularly scheduled Family Faith Formation classes. It is designed for families who want to grow in their faith together and is flexible for those families who cannot attend our traditional program.

Generations of Faith Program Schedule	
(in school cafeteria) 09-10	
Group A	Group B
(Sunday, 10:30-noon)	(Thursday, 6:00-7:45pm)
Sept. 12	Sept. 16
Oct. 3	Oct. 7
Nov. 7	Nov. 11
Dec. 5	Dec. 2*
Jan. 9	Jan. 13
Feb. 6	Feb. 10
Mar. 6	Mar. 10
Apr. 3	Apr. 7

*12/2 is earlier than the Sunday session

PROGRAM POLICIES FOR STUDENTS IN GRADES 1-8

- 1) **Weekly attendance at Mass** as a family. (* SEE BELOW)
- 2) **Monthly attendance** for our scheduled session by **both parents and learners**.
- 3) Work at home on a **weekly** basis, 1 hour per child **per** week, with your children to complete their assignments.
- 4) Complete and turn in **weekly** homework each **month**.
- 5) If a family **misses our monthly session** due to illness or an emergency, the parents agree to contact the coordinator for an assignment to be completed as a family, for the topic covered at the monthly session. Students who arrive late or leave early will not receive credit for the session.
- 6) Parents agree to take their children during Advent and Lent to the Parish Penance services.
- 7) Parents agree to support the grade level service projects which are part of the curriculum.
- 8) Parents agree to adhere to the discipline policies as stated in the handbook.
- 9) More than **one missed month** (by either **parent** or **learners**) or failure to comply to the above policy, will automatically eliminate participation in this program. The learners will then be placed back in a **traditional** program immediately.

* Families agree to **attend entire session** (arriving on time and staying until the **end**) on the session they choose to receive credit for attendance.

SAINT GREGORY THE GREAT FAMILY FAITH FORMATION

2010-11

LEVEL I SCHEDULE - PUBLIC SCHOOL STUDENTS

Tuesday, August 31st - **Group Session** - 7:30-9:00 pm - Ministry Center Gym

Sunday, September 12th - **Group Session** - 5:30-7:00 pm - School Gym

SEMESTER A - THE CREED

Week of: September 19 CLASS

Week of: September 26 CLASS

Week of: October 3 CLASS

Week of: October 17 CLASS

Week of: October 24 CLASS

Tuesday, November 2nd - **Group Session** - "Religion & Science" 7:00-9:00 pm -
Ministry Center

Week of: November 7 CLASS

Week of: November 14 CLASS

Week of: November 21 CLASS

Monday, November 29 Advent Penance Service (students, parents & teachers)
CHURCH 7-8:00pm

Sunday, December 5 5:30 - 7:00 pm Ministry Center Gym
(Students & Teachers) (includes 4:30 pm Mass)

SEMESTER B - LITURGY AND SACRAMENTS

Week of: January 9 CLASS

Week of: January 23 CLASS

Week of: January 30 CLASS

Sunday, February 6 4:30-7:00 School Cafeteria
(Students & Teachers) (includes 4:30 Mass)

Week of: February 13 CLASS

Week of: March 6 CLASS

Week of: March 13 CLASS

**All High School students, in addition to classes,
MUST ATTEND 3 St. Greg's Youth Ministry Events of their choosing.**

SAINT GREGORY THE GREAT FAMILY FAITH FORMATION

2010-11

LEVEL II SCHEDULE - PUBLIC SCHOOL STUDENTS

Wednesday, September 1st - Group Session - 7:30 - 9:00 pm Ministry Center Gym

Sunday, September 12th - Group Session - 5:30-7:00 pm - School Gym

SEMESTER A - "CHRISTIAN MORALITY"

Please Note: classes are held in teacher's home unless otherwise indicated.

Week of: September 19	CLASS
Week of: September 26	CLASS
Week of: October 3	CLASS
Week of: October 17	CLASS
Week of: October 24	CLASS

Tuesday, November 2nd - Group Session - "Religion & Science" 7:00-9:00 pm -
Ministry Center

Week of: November 7	CLASS
Week of: November 14	CLASS

Sunday, November 21st - Group Session - 5:30-7:00 pm - School Gym

Wednesday, December 1 **Penance Service (students, parents & teachers)**
CHURCH 7-8:00PM

Sunday, December 6 **5:30 - 7:00 School Cafeteria (Students & Teachers)**
(includes 4:30 Mass)

*All High School students, in addition to classes,
MUST ATTEND 3 St. Greg's Youth Ministry Events of their choosing.*

SEMESTER B - "CONFIRMED IN A FAITHFUL COMMUNITY"

Confirmation class details will be emailed to those students
who have applied for Confirmation in November, 2010.

**PLEASE NOTE: ATTENDANCE IS EXPECTED
AT ALL CLASSES & EVENTS.**

SACRAMENTAL INFORMATION

First Penance - Grade 2

Parent Reconciliation Workshop	Thurs..	Jan. 6	7:00-8:00 pm	School Cafeteria
			OR	
	Sat.	Jan. 8	9:15-10:15 am	School Cafeteria
Enrollment Mass	Sun.	Jan. 16	9:30 am	Church
First Penance	Mon.	Feb. 28	7:00 pm	Church
			OR	
	Wed.	March 2	7:00 pm	Church

First Communion - Grade 3

Eucharistic Workshop	Thurs..	Feb. 3	7:00-8:00 pm	School Cafeteria
			OR	
	Sat.	Feb. 5	9:15-10:15 am	School Cafeteria
Enrollment Mass	Sun.	Feb. 13	9:30 am	Church
Retreat	Sat.	Apr. 30	9:00-12:00 noon	Church & School
First Communions	Sat.	May 7 - 10, 12, & 2	pm	Church

Confirmation

Confirmation Preparation Sessions:

- Jan. 9th - 1:30-4:15 pm Session followed by
Mass of Enrollment at 4:30 pm in Church
- Feb. 27th or Mar. 1st
- Mar. 13th or Mar. 15th
- Mar. 20th or Mar. 22nd
- Mar. 27th or Mar. 29th

Confirmation Retreats: Students are placed first come first served -
instructions were in the Confirmation packet to reserve your place.
You will receive details by email a few weeks before.

Confirmation Interviews - April 2nd - 9:00am -12:00pm and April 4th from 6:30-
8:30 pm in Gathering Rooms 1 & 2. You will receive your scheduled interview
time in November by email.

Confirmation Rehearsals: Group A: Tuesday, May 10 (7:00 pm - Church)
& **Penance Service** Group B: Wednesday, May 11 (7:00 pm - Church)

Confirmation Dates

The Chancery will notify us by February, 2011. Candidates & teachers will be
notified by email.

CLASSES WILL BE DIVIDED INTO THE FOLLOWING GROUPS:

Group A

Last name beginning **A-J**

Group B

Last name beginning **K-Z**

SPECIAL EVENTS

Great Dinner Auction

Saturday, October 2, 2010

Christmas Pageant

Saturday, December 18, 2010: 9:30 am in church

FFF Sponsored Fish Fry

Friday, April 1, 2011 - School Gym/Cafeteria

Lenten Pageant

Saturday, April 16, 2011: 9:30 am in church

May Crowning

Sunday, May 1, 2011 - during 9:30 am Mass

Great Race

Friday, June 17, 2011: 7:00 pm

Vacation Bible School

Monday - Friday, July 11-15, 2011

Disciple Camp - Grades 6, 7 & 8

Monday - Friday, August 1-5, 2011

First Friday Club - Grades 6, 7 & 8

10/1, 11/5, 12/3, 1/7, 2/4, 3/4, 4/1, 5/6 & 6/3
(7-9:00 pm School Gym & Cafeteria)

Wine Tasting Party

Friday, July 15, 2011: 7:00-9:30pm - Ministry Center

PARISH INFORMATION

PARISH OFFICE - 688-5678 - 200 St. Gregory Court

Office Hours: Monday - Friday, 9:00 a.m. - 4:00 p.m.

MASS SCHEDULE

Weekdays:

Monday - Friday, 7:00 a.m., 8:00 a.m., 12:00 noon

Saturday: 8:00 a.m.

Weekends:

Saturday: 4:00 p.m., 5:30 p.m.

Sunday: 8:00 a.m., 9:30 a.m., 11:00 a.m., 12:30 p.m., 4:30 p.m.

Holy Days: Please check bulletin

PENANCE SCHEDULE

Saturdays: 3:00 - 3:30 p.m. and 5:00 - 5:30 p.m.

OTHER TIMES ON REQUEST

PARISH ADVENT PENANCE SERVICE

Thursday, December 16th - 7:00 pm - Church

ROSARY - Prayed publicly at the following times:

Monday - Saturday: 8:30 a.m. in church

Monday - Friday: 12:30 p.m. in church

Thursday - 6:30 p.m. at grotto or in church (depending on weather)
for Respect Life

CATHOLIC CHARITIES

525 Washington St.
Buffalo, NY 14203

Please call 856-4494 for referral for the following services:
Preventive Services, Intervention Services,
Services for Children, Marriage Counseling, and
Services for Persons with Disabilities and the Elderly

ORGANIZATIONS THAT ACCEPT DONATIONS: (PLEASE CALL FIRST)

Franciscan Center for Boys - 1910 Seneca St., Buffalo

(home for boys 16 - 20 years old)

Contact: 822-8017

What: household furniture, linens, old movies, CD's, cereal,
boys' clothing, teens' hygiene products, school supplies

Ladies of Charity - 1122 Broadway, Buffalo

Contact: Eileen Nowak - 895-4001

What: household items, kitchen equipment, linens, drapes,
also new items

St. Gregory's St. Vincent de Paul Fr. David Kirsch Food Pantry

Contact: 688-5678 Parish Office

What: non-perishable foods